



Name of project:

**De Kleine Komedie
(refurbishment)**

Type of building:

- opera houses
- concert halls
- musical theatres
- drama theatres/lyric theatres
- convention centres
- cultural centres, municipal halls
- cinemas and studios
- children's theatre
- auditoriums
- other projects

Project data:

Client/Owner:
Address:

Stichting De Kleine Komedie
Amstel 56-58
1017 AC Amsterdam
www.dekleinekomedie.nl

Project team:

Architecture:
Structural Engineering:
Mechanical Engineering:
Electrical Engineering:
Acoustics:
Stage Technology, Stage Lighting,
Sound Engineering:

denieuwegeneratie
Van Rossum BV
Van Rossum BV
HXI
-
-
-

Project costs:

Project costs are unveiled. The refurbishment has been unsubsidized, paid for by the theatre with private means.

Capacity of rooms:

Gross floor area (Mainhall) :
Architectural volume:
Seating Capacity (main auditorium):

2.125 m²
8.700 m³
500

Date of official inauguration:

1st of Octobre 2011

Contact person for visits:

Thomas Bruining
publiciteit@dekleinekomedie.nl
Tel.: +31 (0) 20 626 5917

Description of the project:

Being the first theatre of Amsterdam, De Kleine Komedie celebrates its 225th anniversary this year. For this unique occasion, Amsterdam-based architecture office denieuwegeneratie was commissioned to redesign the theatre's public spaces and its interior.

De Kleine Komedie (translates: 'small theatre') is situated on the quay of the river Amstel and was built as a French comedy theatre in 1786 by Amsterdam city architect Abraham van der Hart. The main part of the current structure however, dates from 1947, when the decayed building, used as a bicycle parking at the time, was transformed back into a theatre. Since the 1950s there have been several small interventions, suffocating the interior space completely. After a thorough preparation, the building was stripped and restored in an extremely short time span. The monumental building revealed many surprises, but after a few months of pressurized construction work, it reopened the 14th of October with an anniversary show.

Rethinking the primary functions, public and private routing was split to improve convenience in use for the public and staff. Spatially, the small theatre had to become 'larger' within the limits of the existing state monument.

New internal relations are created for the public by creating visual connections between strategic places. A void between the theatre hall and the facade at the first floor provides an open connection between the three different foyers.

The interior finishings are specifically designed for night use. The skin of the theatre hall is highlighted with a finish of hand-polished white shiny lime plaster according to authentic recipe from the

Renaissance. The opposing inner side of the facade has a dark, basalt color. The light is pulled in from the surrounding theatre district around the building, and at the same time the theatrical interior is exposed to the dark streets outside. This reinforces one of the most important roles a theatre has: serving public life. It's only in a theatre building, where two meanings of the word 'public' coincide, a space to see and to be seen. The small beloved theatre becomes a living room for the city once more.

The use of materials and the detailing of the interior is of high refinement. Old monumental materials and patterns are combined with modern ones, faint finishing is combined with shiny, and soft materials with tough. These contrasts in material finishing are crucial for a theatrical experience. A few examples of the used materials are dark belgian limestone, oak, wool, felt and concrete (bars).

The selected colors are used to direct the eye: bright colors emphasize the bars, seats and doors to the theatre hall. The remaining parts of the small spaces are kept modest in grey tints. The route signing is subtly embedded in the stucco walls. Advertisement, visible installations on parts and lighting are all integrated in the finishing surfaces.

The original theatre hall stayed as it was. The sharp contrast between the old, flamboyant hall and the more humble, modern foyer creates an exciting connection between old and new and will be a home for a new generation of theatre makers and its public.

www.dekleinekomedie.nl



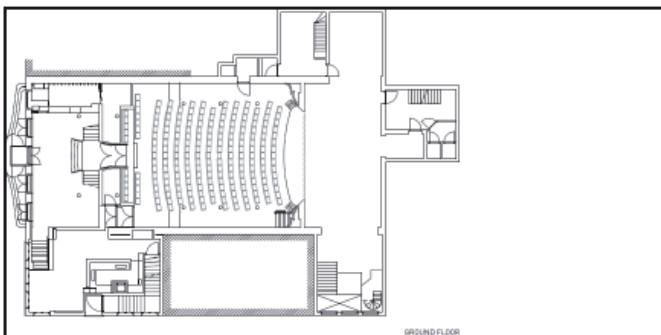
Entrance Hall



Foyer



Historical Theatre Hall



Ground Floor



Side plan



Longitudinal Section



Other Section